



enfields

Enfields Hythe
3 Marsh Parade,
Hythe, Southampton,
Hampshire, SO45 6AN

T 023 8084 9210
E sales-hythe@enfields.co.uk

7 Kendal Close, Chandler's Ford

£450,000

🛏️ 2 🪑 1 🚗 1



- NO FORWARD CHAIN
- LOCATED IN A QUIET CUL-DE-SAC
- CLOSE TO LOCAL AMENITIES
- DETACHED BUNGALOW
- GARAGE WITH OFF STREET PARKING



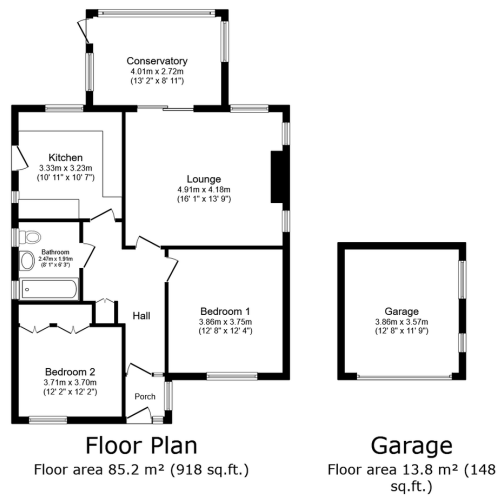
The front of the property benefits from a front garden with a small lawn and shrubs, driveway parking, garage and access to the rear via the side gate.

This fantastic bungalow comprises of an entrance porch which leads into a bright and airy hallway providing access to all rooms.

This property offers one spacious master bedroom and one double bedroom, a bright modern bathroom suite, a modern fitted kitchen and a well-proportioned lounge diner with patio doors which lead into the conservatory.

The rear of the property offers a south westerly facing mature garden with a patio area, lawn and a shed.

Chandler's Ford is a popular area for families as it offers renowned schools and is conveniently located for access to Southampton and Winchester.



TOTAL: 99.0 m² (1,066 sq.ft.)

This floor plan is for illustrative purposes only. It is not drawn to scale. Any measurements, floor areas (including any total floor area), openings and orientations are approximate. No details are guaranteed, they cannot be relied upon for any purpose and do not form any part of any agreement. No liability is taken for any error, omission or misstatement. A party must rely upon its own inspection(s). Powered by www.propertybox.co.uk

